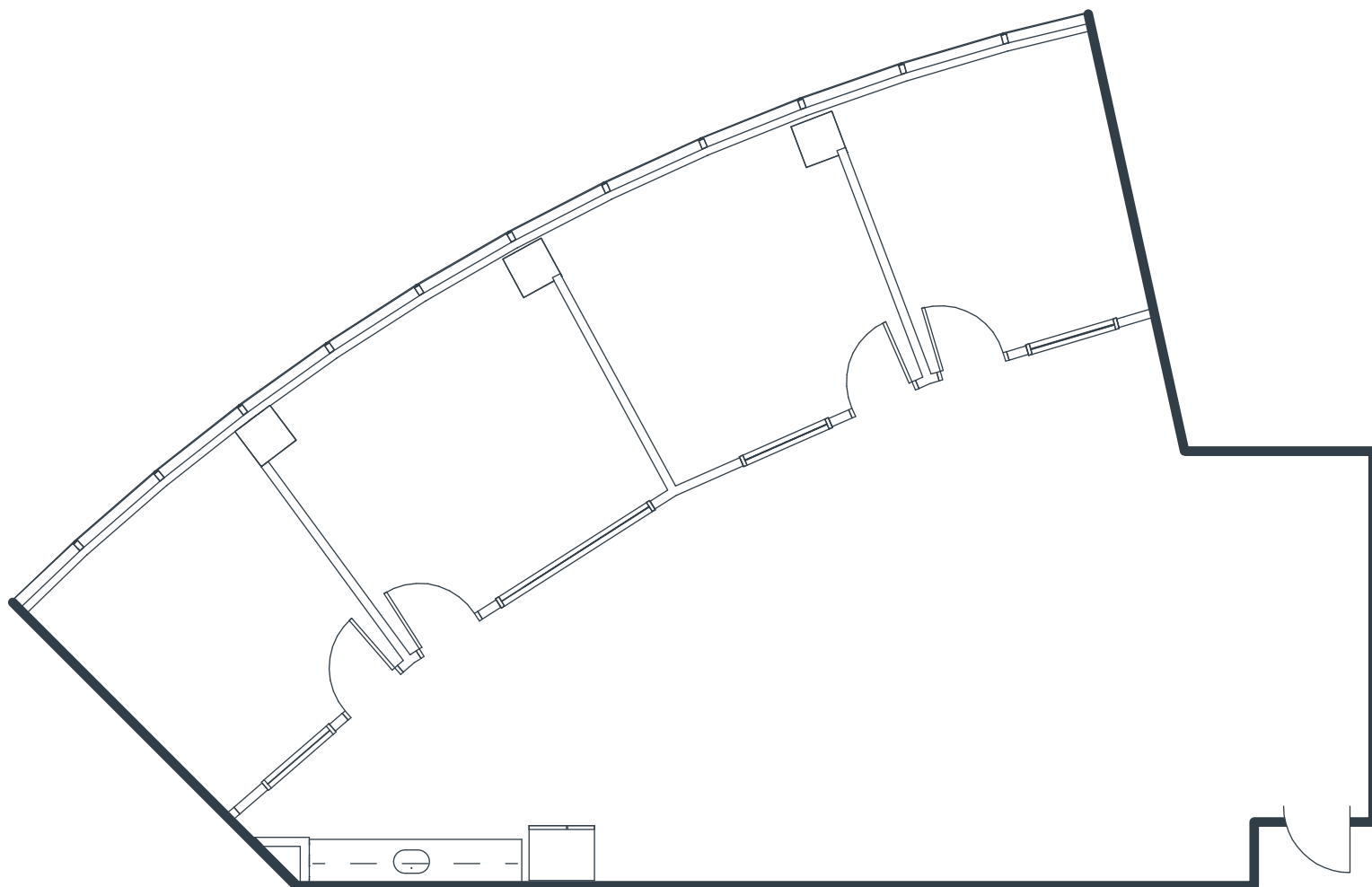


CENTURY CENTRE
2601 Main Street, Suite 1075
Irvine, CA

1,525 Square Feet
\$2.75 RSF/MO
Full Service Gross



Notes:

- Reception
- 4 Window Offices
- Coffee Bar
- Large Open Work Area
- Part of a Professionally Managed Business Park

CONTACT INFORMATION:

All rates, terms, floor plans and building facts subject to change without notice.

ea 9.3.2020

Maria Meyer/Senior Leasing Director
Phone: 949.719.7215
Mobile: 714.393.0776
Email: mmeyer@olenproperties.com

Olen Properties Corp.
Seven Corporate Plaza
Newport Beach, CA 92660
949.644.OLEN
www.olenproperties.com

