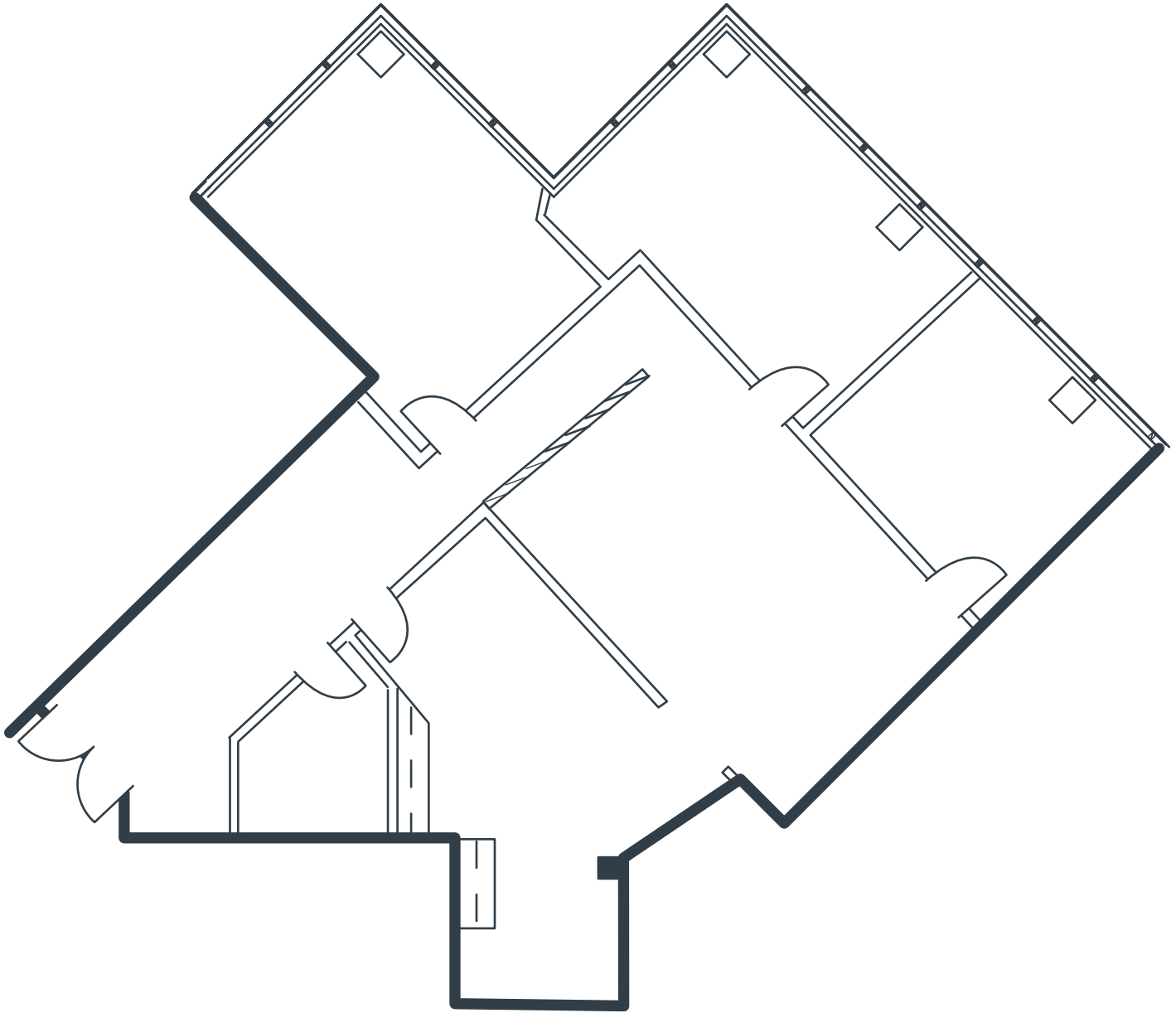


CENTURY CENTRE  
2601 Main Street, Suite 960  
Irvine, CA

2,599 Square Feet  
\$2.60 RSF/MO  
Full Service Gross



Notes:

- Reception
- 3 Window Offices
- Interior Office
- Conference Room
- Open Work Area
- Part of a Professionally Managed Business Park

CONTACT INFORMATION:

All rates, terms, floor plans and building facts subject to change without notice.

ec 6.27.17

Maria Meyer/Senior Leasing Director  
Phone: 949.719.7215  
Mobile: 714.393.0776  
Email: mmeyer@olenproperties.com

Olen Properties Corp.  
Seven Corporate Plaza  
Newport Beach, CA 92660  
949.644.OLEN  
www.olenproperties.com

