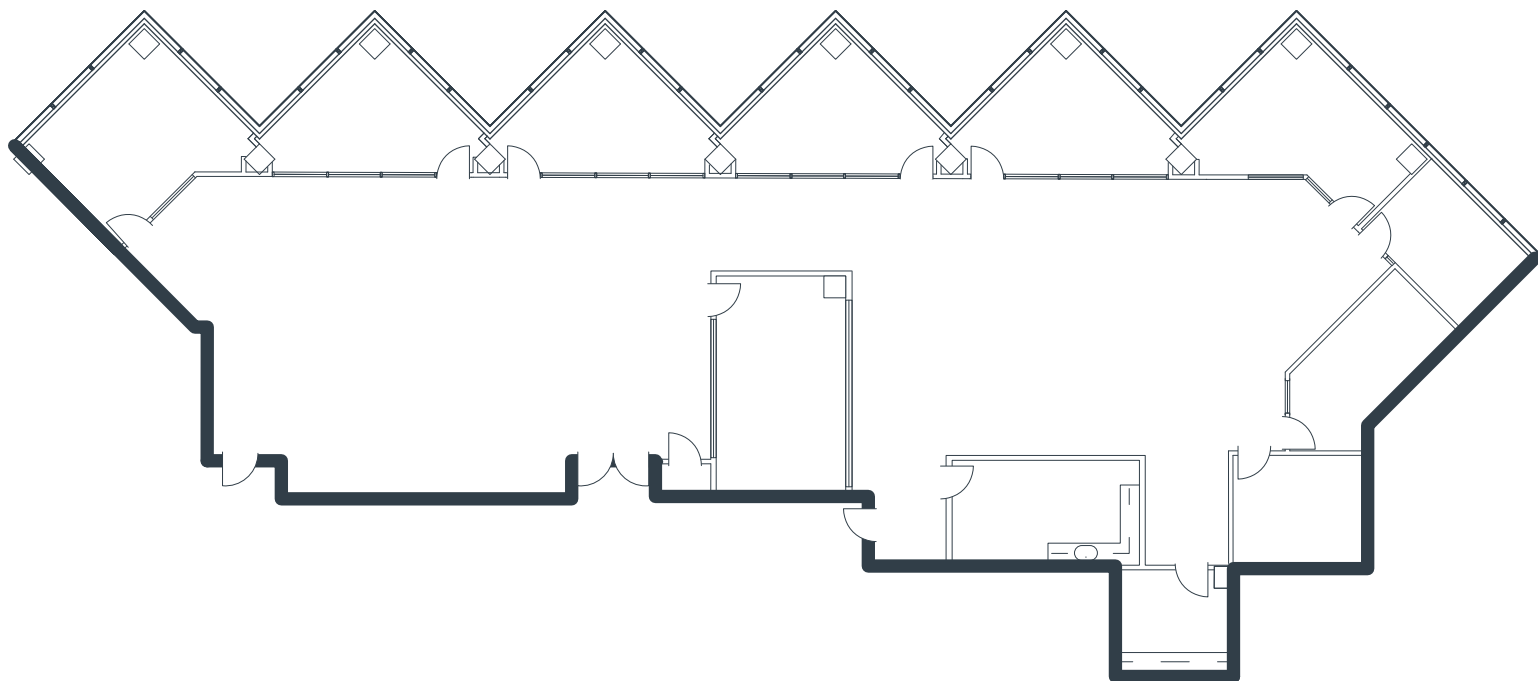


CENTURY CENTRE  
2601 Main Street, Suite 750  
Irvine, CA

5,948 Square Feet  
\$2.75 RSF/MO  
Full Service Gross



### Notes:

- Reception
- 7 Window Offices
- 2 Interior Offices
- Conference Room
- Kitchen
- Storage Closet
- Storage Room
- Large Open Work Area
- Part of a Professionally Managed Business Park

### CONTACT INFORMATION:

All rates, terms, floor plans and building facts subject to change without notice.

ea 6.10.19

Maria Meyer/Senior Leasing Director  
Phone: 949.719.7215  
Mobile: 714.393.0776  
Email: mmeyer@olenproperties.com

Olen Properties Corp.  
Seven Corporate Plaza  
Newport Beach, CA 92660  
949.644.OLEN  
www.olenproperties.com

